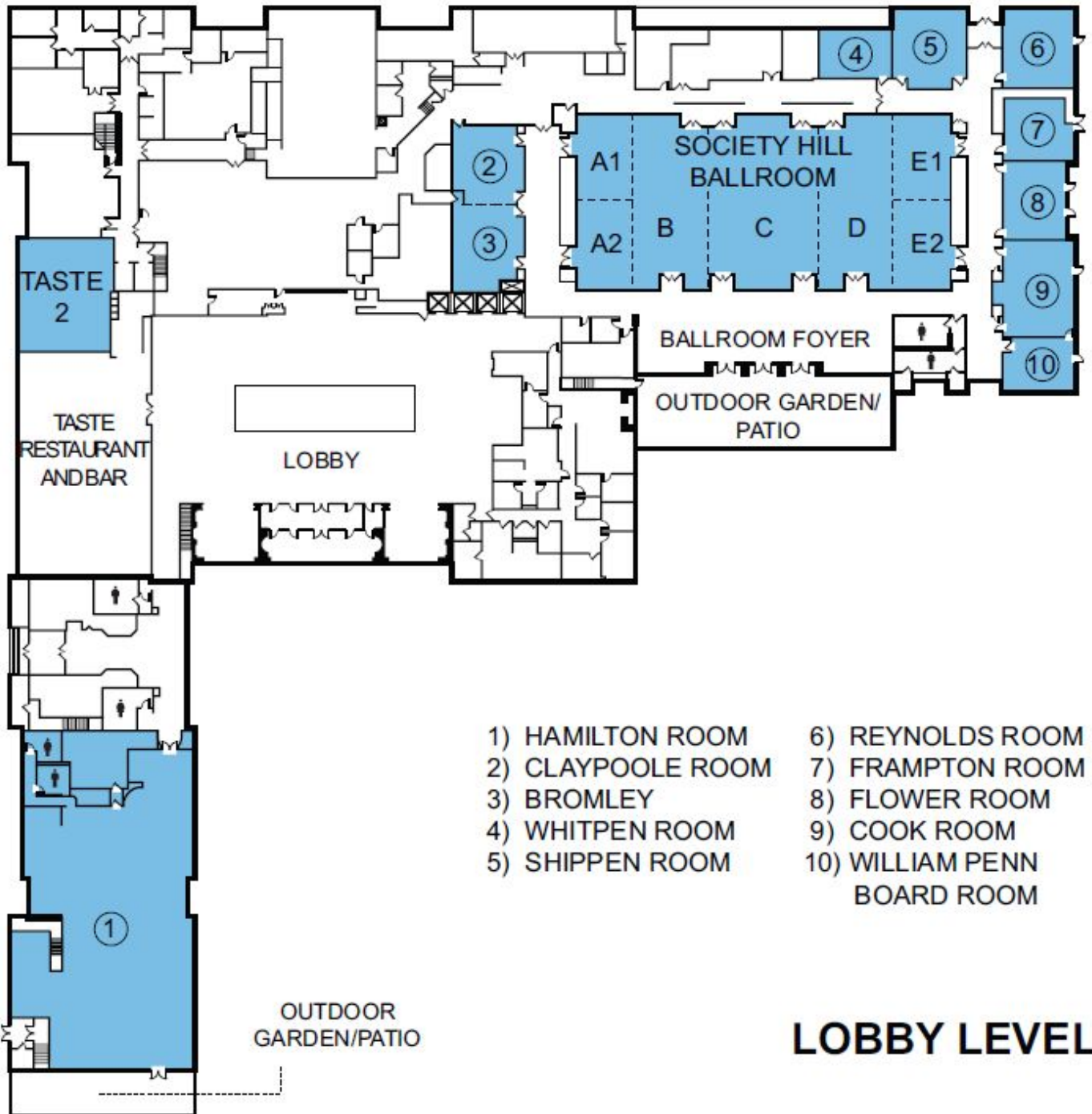


Agenda

1. Introductions
2. Tour of the Sheraton Society Hill
3. Brief refresher of the [local host committee roles](#) and [Schedule](#)
4. Reports from subcommittees and scheduling activities
There are some ideas on [this group document](#)
 - a. [Speakers Subcommittee - 2014apapaSpeaker@googlegroups.com](#)
 - i. Potential Speakers
 - b. [Program Subcommittee - 2014apapaProgram@googlegroups.com](#)
 - i. Release of Call for Proposals
 - c. [Special Events Subcommittee - 2014apapaEvents@googlegroups.com](#)
 - i. Opening Reception Location Possibilities
 - d. [Fundraising Subcommittee - 2014apapaFundraising@googlegroups.com](#)
 - i. Review draft sponsor materials
 - e. [Marketing Subcommittee - 2014apapaMarketing@googlegroups.com](#)
 - i. Push to attract affiliate organizations and businesses such as architects, engineers, and other related professions. APA-PA Southeast Section is compiling a list of agencies and organizations to partner with for future Southeast Section events. Please take a few moments to view the Prezi Chart (<http://bit.ly/APAPASEpartnerchart>) and add any contacts to the spreadsheet link located in its center or here at <http://bit.ly/APAPASEpartners>.
 - f. [Emerging Professional and Student Subcommittee - 2014apapaStudent@googlegroups.com](#)
5. Other Discussion
6. Next Meeting
 - a. Select Date (<http://bit.ly/2014ConfFeb>)

Sheraton Philadelphia Society Hill Hotel Layout



- | | |
|-------------------|--------------------------------|
| 1) HAMILTON ROOM | 6) REYNOLDS ROOM |
| 2) CLAYPOOLE ROOM | 7) FRAMPTON ROOM |
| 3) BROMLEY | 8) FLOWER ROOM |
| 4) WHITPEN ROOM | 9) COOK ROOM |
| 5) SHIPPEN ROOM | 10) WILLIAM PENN
BOARD ROOM |

LOBBY LEVEL